

## **TR6 Bonnet Strut Kit**

### **Installation Instructions**

Note: Before installation, make sure your bonnet is secure and your hinges are not worn out. If you can push & pull on your closed bonnet, and it moves around (watch the gaps to your fenders) then you should find the cause and remedy the problem. You may need to tighten the bolts that fasten your hinges, or you may need new hinges which are available for about fifty dollars each.

#### **Left Hand Installation:**

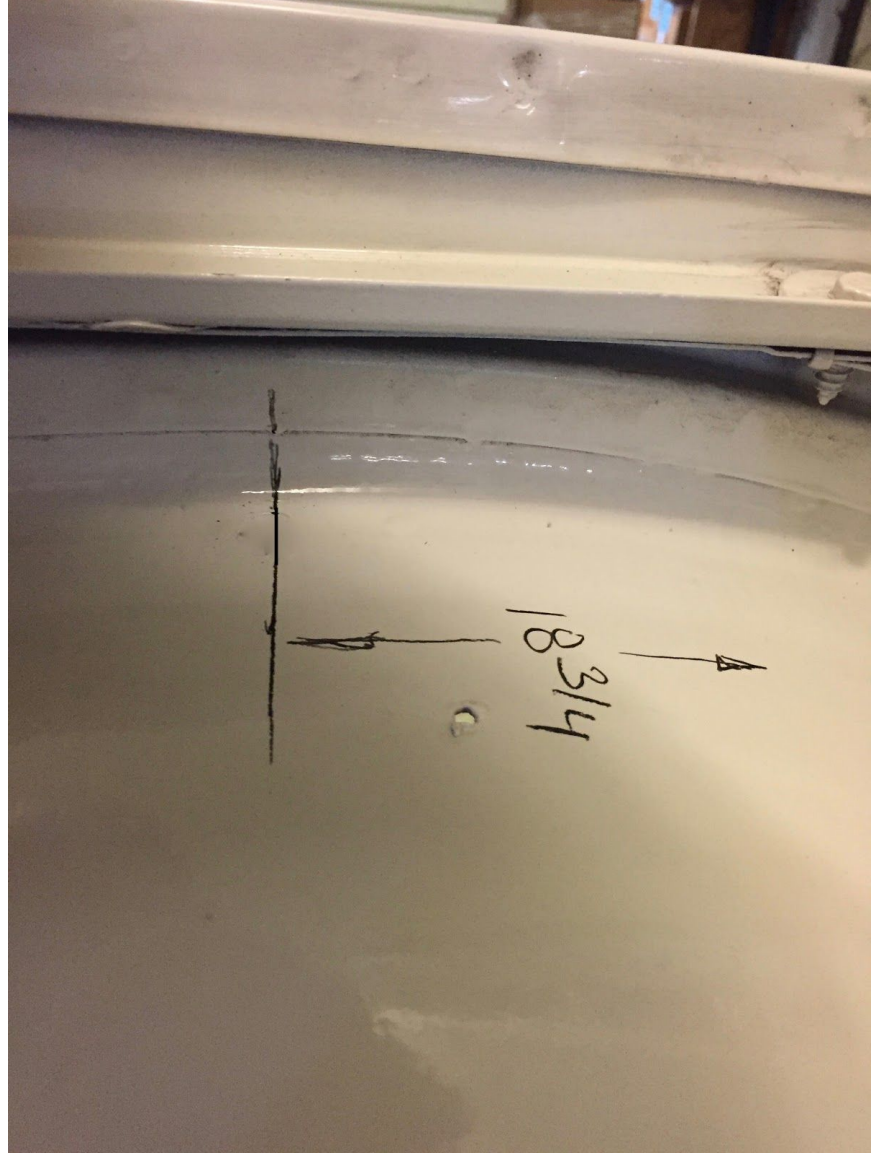
1. Assemble the Ball Stud and THREE flat washers to the TOP side of the Bracket. Note that the TOP side has 90 degree edges whereas the bottom side has radiused edges.. A drop of thread lock is recommended so the ball stud cannot ever vibrate loose.



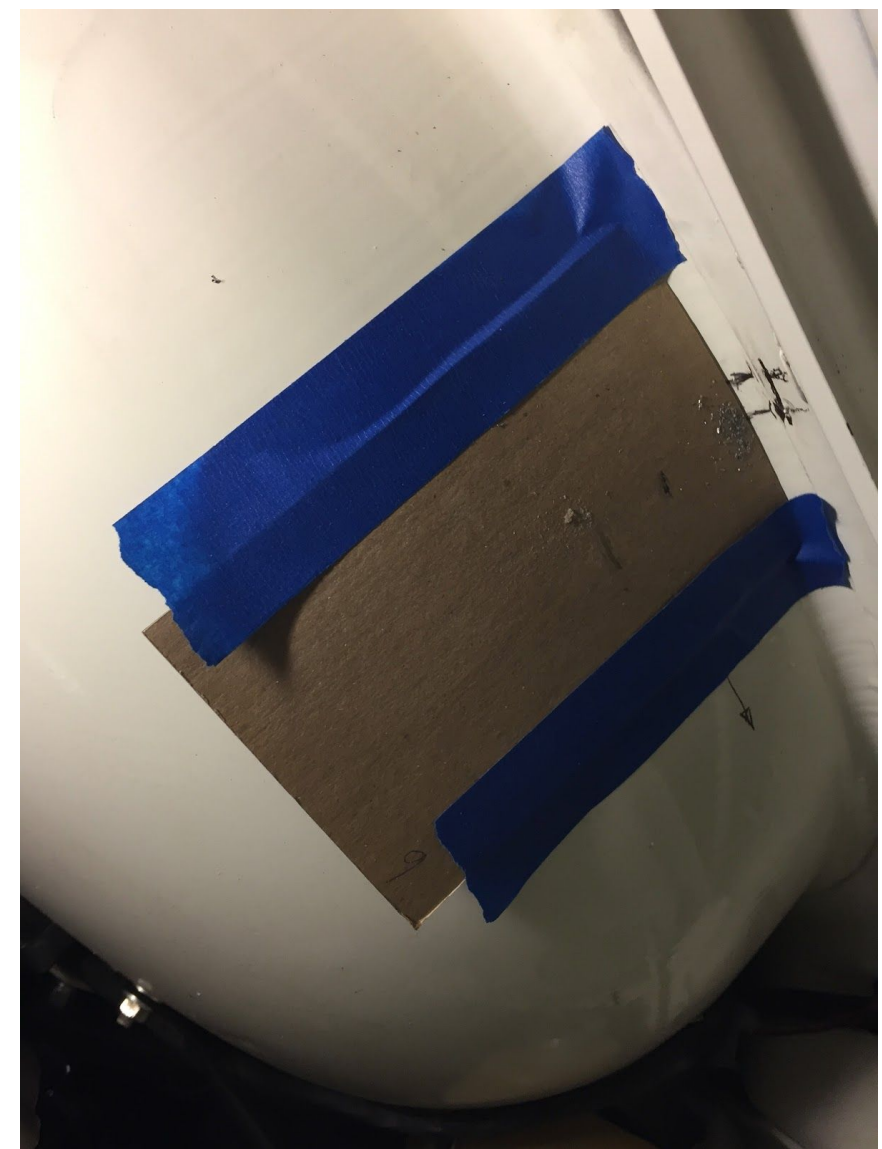
2. Remove the 1/2" bolt from your LH bonnet hinge channel, and replace it with the longer bolt (supplied), along with the flat washer and Bracket. Note that the bracket is made to be adjustable up and down the channel, but align it with the top end of the channel as shown.



3. Measure exactly 18 3/4 inches from the front panel as shown and draw a line.



4. Measure exactly 1/8 inch above the metal edge, and countersink the location so you drill accurately! Protect the area with some cereal box cardboard before drilling.



5. Drill carefully first with a small bit--1/16 or 3/32 inch--for accuracy. Then follow with 1/4 inch bit.



Finished 1/4 inch hole shown from both sides:



6. Now install the ball stud, using a flat washer and nut on the back side. Hold the front side still with a wrench as shown. Use a drop of thread lock on the nut to make sure it can't vibrate loose.. Note: if you have a thick layer of undercoating, you may have to remove some of it to get the nut fully onto the stud.



7. Now remove the factory prop from the right side, and snap on the left hand strut as shown. Close and open your bonnet to ensure smooth operation.



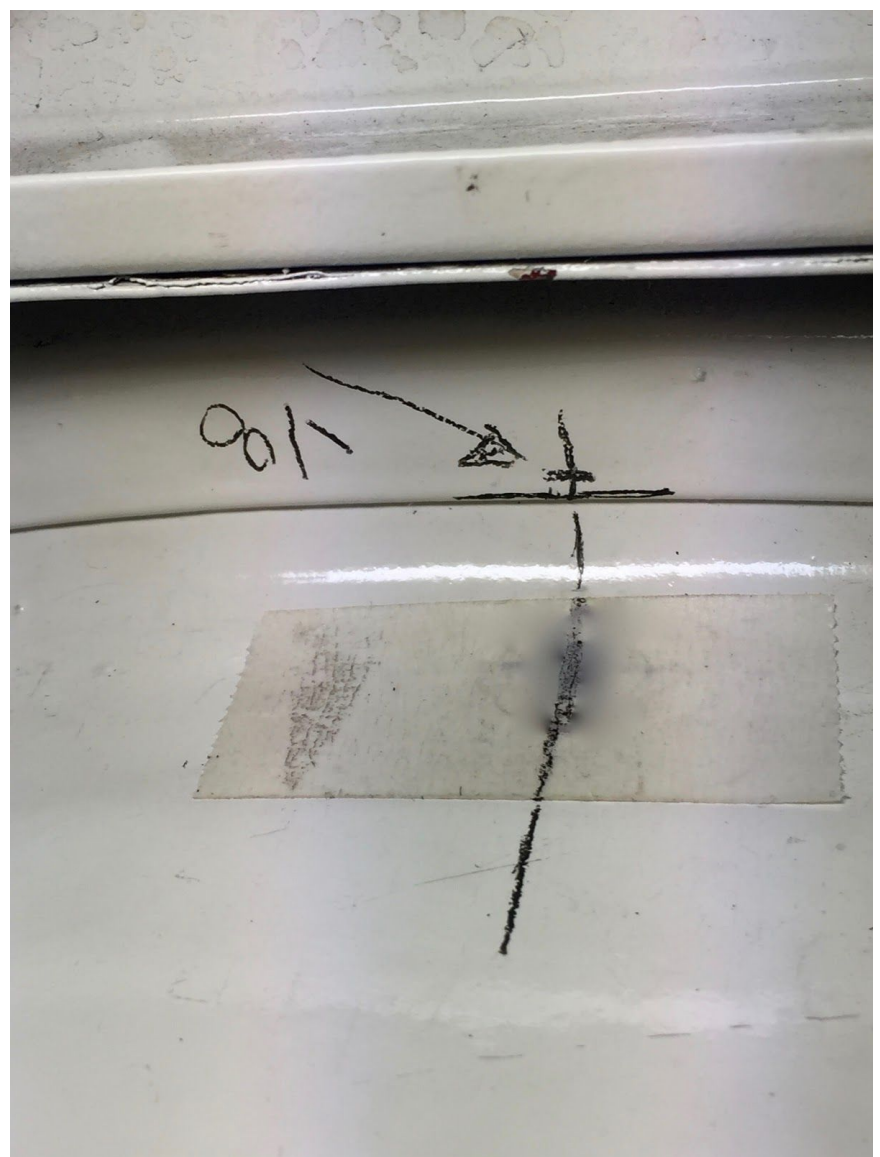
**Right Hand Installation:**

Installation is identical to the LH side.

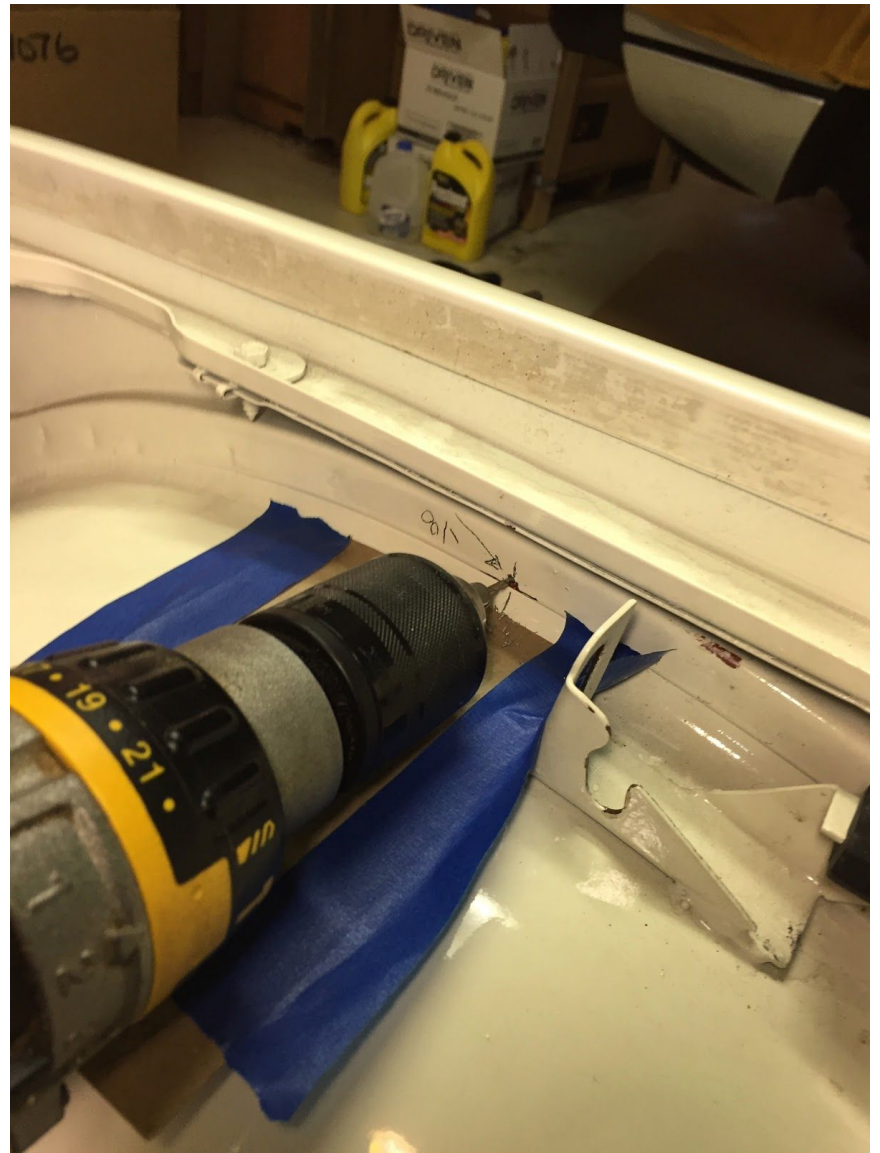
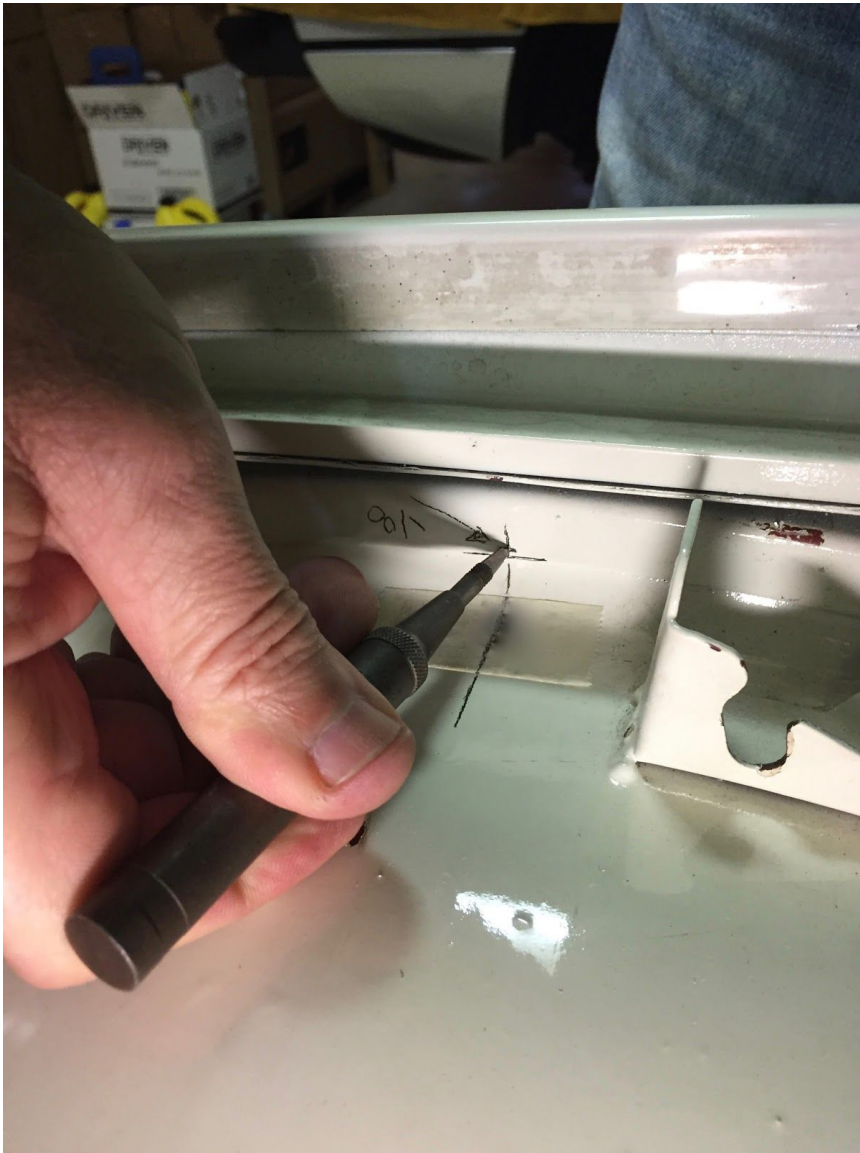
8. Assemble the RH bracket and install.



9. Measure 18 3/4 and mark the hole location 1/8 inch above the metal edge.



10. Countersink the hole location, protect your fender with cardboard, and drill--first with small bit for accuracy, then with 1/4 inch bit.



11. Fasten ball stud with flat washer and nut. Use thread lock so nut cannot vibrate loose. Snap on strut. Open and close bonnet to check operation.



12. Finally, insert the 4 locking wires so the struts are locked onto the ball studs and cannot be knocked off. This can be tricky, because some are blind. It may help to detach one end from its ball stud to insert the first wire (into the other, connected end), and then reattach for the second wire. The first photo illustrates only how the Locking Wire inserts into the end fitting. Insert the wire fully and then rotate until it snaps onto the end-fitting collar, thus locking the ball stud inside the end-fitting.



13. Done!